

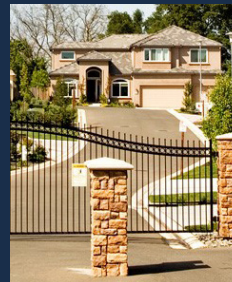


ASISY FEATURE

COUNTERMEASURES IN SECURITY

In the world of physical security, one of the most important steps in safeguarding an organization's assets, personnel, and facilities is conducting a thorough and systematic Physical Security Assessment (PSA). The ASIS Physical Security Assessment is a comprehensive evaluation that provides organizations with the information needed to identify vulnerabilities, assess potential threats, and develop strategic mitigation measures.

- Page 8



Crime Prevention Through Environmental Design - An Aid to Security

CPTED offers a multidisciplinary approach to deter criminal behavior by focusing on design, physical layout, management, and use of the environment.

- Page 4



LEVEL UP YOUR SECURITY CAREER Physical Security Professional (PSP®)

APPLY FOR PSP

The Physical Security Professional (PSP®) certification shows your mastery of Physical security assessments, designs, applications.



**MODERNIZING SECURITY WITH ROBOTICS PROCESS AUTOMATION
READ MORE**

Security Professionals Grapple with Criticism, Board Mandates, and Public Anger in the Wake of Targeted CEO Attack



READ MORE



Contents

Harnessing the Power of AI, Machine Learning,
and Data Analytics in Security

2

Crime Prevention Through
Environmental Design - An Aid to Security

4

Keron Thomas - Secretary-elect 2025

5

My Experience at GSX 2024

6

Chapter Quiz

7

Conducting an ASIS Physical Security
Assessment: A Strategic Approach
to Risk Mitigation

8

Citation - Andrew Witham

10

Cover Photo courtesy of: <https://its.ucsc.edu/physical-security/index.html>

The Informer is published by the Jamaica Chapter of ASIS International. All views, opinions and conclusions expressed in this newsletter are those of the authors, and do not necessarily reflect the opinion and/or policy of ASIS or its leadership. References in this newsletter to any specific commercial products, process or service by trade name, trademark, manufacturer or otherwise, does not necessarily constitute or imply endorsement, recommendation or favouring by ASIS International or its leadership.





HAPPY HOLIDAYS

"Wishing you a joyful holiday season filled with peace and cherished moments with your loved ones."

Lt. Col. Oswald J. Smiley, JP, CPP, PSP
CHAIRMAN
ASIS INTERNATIONAL
JAMAICA CHAPTER



**EXEMPLIFY
EXCELLENCE
Rise to the Top**

APPLY FOR CPP

Certified Protection Professional (CPP®)

Earning the Certified Protection Professional (CPP®) credential isn't the end of your achievement—it's only the beginning. The internationally recognized and respected "gold standard" in security management expands your career potential like nothing else. Translate your expertise into a competitive advantage today.



Warren L. Smith
CISSP, CRISC, PMP, PMI-RMP, CPP, PCI, PSP
ASIS Council Liaison

HARNESSING THE POWER OF AI, MACHINE LEARNING, AND DATA ANALYTICS IN SECURITY

AI-DRIVEN SYSTEMS CAN MONITOR FOR SUBTLE CHANGES IN PHYSICAL ENVIRONMENTS USING SMART TECHNOLOGY.

In today's rapidly evolving security landscape, the integration of Artificial Intelligence (AI), machine learning (ML), and data analytics is transforming how we manage security. These technologies are enabling organizations to respond to threats faster, more accurately, and more effectively. I've seen firsthand how these innovations act as a force multiplier, enhancing security operations across the board.

AI and machine learning, while often considered futuristic, are already deeply integrated into security systems. These technologies empower security professionals to stay ahead of threats before they escalate into incidents, shifting the focus from reactive to proactive security measures.

In physical security, surveillance and loss prevention side of a business, one of the most effective applications of AI is image comparison. AI-powered surveillance systems can continuously compare real-time video footage with pre-registered images or known patterns. For example, if an unauthorized individual enters a secure area, the system can immediately detect this discrepancy and alert security teams. This ability to compare and contrast images in real-time ensures that security personnel can respond to potential breaches faster and more efficiently, reducing response times and minimizing risks.

Similarly, AI-driven systems can monitor for subtle changes in physical environments using smart

“

Cameras equipped with AI can detect small but critical anomalies, such as an open door or a window being tampered with, and notify security personnel instantly.

technology. Cameras equipped with AI can detect small but critical anomalies, such as an open door or a window being tampered with, and notify security personnel instantly. These systems excel in detecting changes that might otherwise go unnoticed, allowing security teams to act before small issues become major threats.

Machine learning enhances these capabilities by learning from previous incidents. For example, if a suspicious package was left in a public area, machine learning algorithms can analyze behavior patterns and identify similar situations in the future. Over time, the system becomes more adept at recognizing emerging threats, often before they fully materialize. This predictive capability helps security teams stay ahead of potential risks, preventing incidents before they occur.

Beyond real-time threat detection, data analytics enables a proactive approach to security. By analyzing data from multiple sources, such as security cameras, social media, and internal databases, organizations



Incorporating AI, ML, and data analytics into security operations is no longer a luxury but a necessity. These technologies allow organizations to scale their security operations without proportional increases in staff.

can uncover insights that inform smarter decision-making. This data-driven approach helps security teams prioritize risks, allocate resources more effectively, and identify vulnerabilities before they are exploited.

Predictive analytics also plays a key role in risk management. By analyzing trends in criminal activity or other risk factors, AI and ML can help forecast

potential threats, allowing security teams to prepare and mitigate risks ahead of time. This level of foresight significantly enhances operational resilience and helps prevent costly disruptions.

Incorporating AI, ML, and data analytics into security operations is no longer a luxury but a necessity. These technologies allow organizations to scale their security operations without proportional increases in staff, handling larger volumes of data and more complex threats. As businesses grow, these innovations enable more agile, efficient, and resilient security frameworks. Security professionals who leverage AI and data analytics today will be well-positioned to lead the future of security, ensuring the safety and success of their organizations in an increasingly complex world. The future is already here, and it is powered by intelligent automation and data.

E-FAST

Emergency First-aid & Safety Training



**Preserving Lives,
Empowering People.**

Services offered include:
Standard First Aid Training
Paediatric First Aid Training
CPR and AED Training

First aid kits available for individual and corporate clients

Contact Information

emergencyfastja.com
876-281-4772 / 876-830-0792
info@emergencyfastja.com
 @efastja **EFAST Jamaica**



Photo courtesy of: https://richmondjamaica.com/wp-content/uploads/2018/03/1517377875-05_-_View_from_Main_Gate.jpg



Crime Prevention Through Environmental Design - An Aid to Security

Carlos Pipher, BSc (Hons) CPP, PCI, PSP
Newsletter Editor

The defensible space is the brainchild of Architect Oscar Newman. His work examined how unwanted behavior could be designed in the built environment. Newman's work provided the genesis of Crime Prevention Through Engineering Design (CPTED). CPTED shows us how design and proper use of the built environment will ultimately bring a reduction in criminal activity and increased well-being.

CPTED offers a multidisciplinary approach to deter criminal behavior by focusing on design, physical layout, management, and use of the environment. Schools, shopping centres, large facilities with multiple buildings, and residential communities can be designed to produce behavior that negates crime or the fear of it, example, a properly lit car park reduces crime or the fear of crime. Criminal behavior is common in some areas simply because their design allows for it, whereas proper conduct and behavior becomes natural in other areas. The use of space should be well thought of in the design phase so that good behavior is encouraged. Imagine having a parking lot at the back of a building with a gully next to it!! a very easy getaway for a perpetrator.

“

CPTED shows us how design and proper use of the built environment will ultimately bring a reduction in criminal activity.

The main elements of CPTED are territoriality, natural access control, and natural surveillance. Territoriality is establishing boundaries to mark ownership and responsibility; this is accomplished by landscaping, fencing, signs and flowers. Natural Access Control is the physical guidance of people coming and going into a space by the placement of entrances, exits, fencing, landscaping, and light. Natural surveillance brings about law-abiding behaviour, because a clear view of neighbouring property is enabled. A high wall may keep out an intruder but if the intruder manages to get on the property, chances are he/she will not be seen by casual observers. Malevolent acts are curtailed when perpetrators know that they may be seen. A chain link fence with flowers that is no higher than 3ft alongside is excellent for natural surveillance.

The Broken Windows Theory

The broken windows theory by James Wilson and George Kelling compliments CPTED approach. The

'broken windows' theory speaks of urban disorder and vandalism, increasing crime and anti-social behavior. When we see things broken, dilapidated or abandoned it is perceived that no one cares or there is no sense of ownership; thus, it is ok to cause further damage or violation of the area. Crime is more likely

to occur in facilities, communities/environments showing less care or order. Effective maintenance by management and monitoring by professional security guards will prevent small infractions such as trespassing and graffiti thereby preventing more serious crimes.



Keron Thomas
M.Sc., B.Sc, PCI, PSP
Secretary-Elect 2025

Keron Thomas is a security professional with over 20 years of experience, having held numerous leadership positions within the private security industry. He has served as the Security Manager for Jamaica Broilers Group Limited (JBG) for the past seven years, where he provides security leadership and guidance across several sites, ensuring the protection of JBG assets.

Before joining JBG, Keron was the Technical Manager with the Priority Group of Companies, where he oversaw investigations, surveillance, case preparation, and risk management. He has been a member of ASIS International since 2013. He holds certifications as a Professional Certified Investigator (PCI) and Physical Security Professional (PSP) and is currently preparing to sit for the prestigious Certified Protection Professional (CPP) exam.

As a member of the Jamaica Chapter of ASIS International, Keron has served on the Board of Management Committee in roles such as Placement Chairperson and Young Professional Liaison. Recently, he was elected Chapter Secretary for 2025.

Equipped with extensive training, experience, and a passion for continuous learning, Keron freely contributes his expertise to enhance organizational security. An avid reader, he holds a Master of Science in Fraud and Risk Management from the University of Salford and a Bachelor of Science in Security Administration and Management from the Caribbean Maritime University.

ASIS AWARDS OF EXCELLENCE CELEBRATION with the Outstanding Security Performance Awards (OSPAs)



My Experience at GSX 2024

**Conroy Samuda, CPP, PSP
Member**

I had the pleasure of attending my first Global Security Exchange (GSX) this year in Orlando, Florida. I must say that it was an exhilarating experience that provided a unique opportunity to engage with industry leaders, explore cutting-edge technologies, and expand my professional network.

One of the highlights of the event was the diverse range of sessions and workshops that were available. Renowned experts shared their insights on topics such as cybersecurity, risk management, and the evolving landscape of physical security. I found the discussions about integrating AI and machine learning into security protocols fascinating.

The exhibition hall was a testament to the innovation in the security industry. Numerous vendors showcased their latest products and solutions, from advanced surveillance systems to state-of-the-art access control technologies. I had the opportunity to interact with representatives, ask questions, and see demonstrations that showed how these tools can enhance security measures. It was enlightening to see how technology is shaping the future of security.



Lyming at the Ice Bar, L-R: Maj. Lamb, Capt. Bewry and Lt. Col. Smiley.

“

The exhibition hall was a testament to the innovation in the security industry. Numerous vendors showcased their latest products and solutions, from advanced surveillance systems to state-of-the-art access control technologies.

The event was not just a conference; but a transformative experience that reinforced my commitment to the security industry. The knowledge gained, the connections made, and the innovative solutions explored will undoubtedly influence my professional journey moving forward. I left the event with a renewed sense of purpose and excitement about the future of the industry.

I also had the pleasure of enjoying the event alongside my colleagues from the Jamaica Chapter of ASIS International as well as those from the broader ASIS International community. The was time well spent and I'm already looking forward to GSX 2025 and the opportunities it will bring!



Chapter Quiz

Test your knowledge on this Chapter Quiz at the next Chapter Meeting.

The member who is in good standing and answers the most correct answers get a Chapter branded polo shirt.

1. Who is Jamaica's first triple certificant?
2. What is the name of Jamaica's longest serving Chairman?
3. Capt. Garth Gray, CPP, PCI, PSP was the Assistant Regional Vice President for which years?
4. Name the chapters in Region 7B.
5. What is the name of Jamaica's eighth triple certificant?
6. How many consecutive years has the Chapter won the I.B. Hale Award?
7. What is the name of the chapter's first female CPP?
8. Who was Vice Chairman when Warren Smith, CPP, PCI, PSP was Chairman?
9. What is the latest addition to the chapter's logo?
10. Who was the first Newsletter Editor for the Chapter?
11. Who was the woman in security (WIS) liaison before the current WIS liaison?
12. What are the elected positions that are voted for at an AGM?
13. What is the name of the current WIS?
14. What is the function of the BMC?
15. What is the name of the chapter's Chief Instructor?
16. How many of our past chairpersons are still alive?
17. Which year did the chapter have the highest number of active members?
18. Which year was a chapter member awarded the E. J. Criscuoli, Jr, CPP Volunteer Leadership Award?
19. Who was the chapter's first CPP?
20. Who was the chapter's first PCI?
21. How many of the chapter's chairpersons served in the JDF?
22. Which past chairperson was also a former head of the Police Federation?
23. Which date was the Jamaica Chapter formed?
24. Who is the longest serving female member of the chapter?
25. Which chapter member achieved triple crown status in the shortest length of time?



**YOUR TWO-YEAR MAP FOR
PUBLIC TO PRIVATE CAREER
TRANSITIONS**



READ MORE



Conducting an ASIS Physical Security Assessment: A Strategic Approach to Risk Mitigation

Lt. Col. Oswald J. Smiley, CPP, PSP
Chairman, Jamaica Chapter

In physical security, safeguarding an organization's assets, personnel, and facilities begins with a thorough Physical Security Assessment (PSA). The ASIS PSA is a structured process designed to evaluate vulnerabilities, assess threats, and develop strategic mitigation measures. Following ASIS best practices and frameworks ensures organizations have robust systems prepared for emerging risks.

The PSA assesses existing physical security measures, identifying weaknesses in infrastructure, policies, and procedures while aligning with ASIS International's standards. It covers critical domains such as access control, perimeter security, surveillance, and emergency response protocols.

KEY BENEFITS OF A PSA

- 1. Identify Vulnerabilities:** Review physical barriers, surveillance systems, and access controls to pinpoint exploitable weaknesses.
- 2. Assess Threats:** Evaluate risks like vandalism, theft, terrorism, workplace violence, or natural disasters using historical data and trends.

“

An ASIS PSA is a vital tool for organizations seeking to protect their assets.

- 3. Develop Tailored Solutions:** Provide actionable, customized recommendations to optimize security measures and resource allocation.
- 4. Ensure Compliance:** Align security systems with regulatory standards, minimizing non-compliance risks.
- 5. Improve Incident Response:** Strengthen emergency plans for rapid, effective action during breaches or crises.
- 6. Cost-Effective Security:** Prevent costly incidents by addressing gaps through proactive measures.

KEY STEPS IN THE ASIS PSA PROCESS

- 7. Pre-Assessment Planning:** Define scope and objectives, review security policies, form a stakeholder team, and allocate resources.

8. Physical Site Survey: Inspect facilities to evaluate:

- ▶ **Perimeter Security:** Fencing, gates, barriers, and environmental design principles (CPTED).
- ▶ **Access Control:** Doors, locks, biometrics, and security guard protocols.
- ▶ **Surveillance Systems:** Coverage and functionality of cameras, alarms, and motion sensors.
- ▶ **Lighting:** Adequacy for deterrence and monitoring.

9. Risk and Threat Assessment: Identify threats, assess their likelihood and impact, and prioritize risks using a matrix.

10. Policy and Procedure Review: Ensure access control, personnel training, and emergency protocols are robust and effective.

11. Recommendations and Reporting: Highlight weaknesses, propose cost-effective solutions, and prioritize urgent actions.

12. Implementation and Follow-Up: Collaborate on improvements and conduct regular reassessments to address new threats.

BEST PRACTICES

- **Regular Reviews:** Security measures should evolve with emerging risks and technology.
- **Adopt Advanced Technology:** Integrate AI-driven surveillance and biometric access controls.
- **Engage Stakeholders:** Include diverse input from facility managers, employees, and department heads.
- **Focus on Prevention:** Emphasize training, awareness, and strong access control policies.

CONCLUSION

An ASIS PSA is a vital tool for organizations seeking to protect their assets. By systematically evaluating and enhancing security measures, organizations can strengthen their posture, mitigate risks, and ensure long-term resilience in an ever-changing threat landscape.

FORENSIC
POLYGRAPH SERVICES
Detecting Deception Since 1999

CONTACT
876-383-2754
876-792-0875
forensicpolygraphja.com
forenpoly@gmail.com
forensicpolygraph.ja

LET US UNCOVER THE TRUTH
FORENSIC POLYGRAPH SERVICES

- ➔ Investigative Polygraph Tests
- ➔ Pre-Employment Polygraph Tests
- ➔ Infidelity Polygraph Tests
- ➔ Behavioural Analysis Interviews
- ➔ Background Investigations

9



Gone but not forgotten, sadly
missed by the Jamaica Chapter.



Citation

Andrew Witham

he would have joined the police. He was not deterred and was able to join the special constabulary. He saw himself in law enforcement even if others could not. And so, he spent 15 years donating thousands of volunteer hours to law enforcement.

At the cognitive age of 14, it is normal for a boy to start focussing on the future and setting personal goals. Some even challenge the assumptions and solutions presented by adults. 14-year-olds want their independence. In retrospect Andrew Witham was a normal 14-year-old. Certainly, he had been thinking about what he wanted to be in life and had decided he wanted to be an engineer. Usually, little thought is given to the type of engineer one wants to be. But Andrew, or Drew as he is fondly called, was not like that. He knew that he wanted to be a train engineer – specifically, a signalling and telecommunications engineer.

As the eldest of four siblings, he knew he needed to set an example. He would study hard; he would graduate at the top of his class and he would attend university and become a train engineer. Naturally, his younger siblings would follow in his footsteps. Or alternately, he would have a great time at school, fool around, have fun, forget to study for his exams and not go to university. For reasons best known to him, Drew decided on the latter approach.

At 18-years old, Drew packed his bags jumped onto his bicycle and rode off into the horizon to find fame and fortune. Tonight, he has found fame, maybe tomorrow he will find fortune. Unless he has shares in Twitter, in which case he probably found fortune yesterday.

Drew's first job was in engineering. Seriously. Andrew Witham's first job was building record cleaning machines. Engineer/technician – what is in a name? From there he went on to building an impressive resume in the fields of management, law enforcement, security management and lots of volunteer work. But for his dodgy eyesight

During those early years, Andrew held managerial positions for a number of companies. He became Corporate Fraud and Security Manager with a media company, ComTel, now Virgin Media from 1995 to 1998 and describes his time at ComTel as his favourite job. At ComTel, Andrew;

- Performed loss prevention functions and physical security for over 2,000 staff covering over 54 premises.
- Served as a single point of contact for all fifty-two police departments throughout the UK as well as the investigation of all emergency call queries.
- Established a “Malicious Call Trace” initiative to prevent fraudulent criminal reports that reduced labour hours spent investigating issues by 20%.
- Oversaw the development of software and hardware solutions for network security, fraud detection, and access security.
- Held “expert witness” status in the field of telecommunications, assisting in the industry drafting of the Telecommunications (Fraud) Act 1997.
- Guest speaker at 1998 Telecommunications Billing Conference in Atlanta, GA. “Fraud Control - Competitive Pressures, Common Challenges and Future Directions”;
- Founding Member of the Telecomm UK Fraud Forum (TUFF) and a member of the Communications Fraud Control Association (CFCA).

After ComTel, Andrew moved to California where he held several law enforcement and private security positions. Unfortunately, Andrew's health deteriorated because of his intense professional routine. He decided to leave California for a nice quiet Caribbean island which had low crime rates and a stress-free environment - everything a man recovering from a heart attack needs. So, he chose Jamaica. And we are the better for it.

Andrew began working as the Post Security Manager and Fire Safety Manager at the British High Commission in 2013. In this role he is responsible for the day-to-day management of security. He also provides professional advice on physical security issues. We suspect that this is now Andrew's favourite job. Drew describes himself as a dynamic, results-oriented professional with strong aptitudes in leadership, conflict resolution and security management in both national and international settings. We could not agree more.

Drew joined ASIS International in 2019 and immediately reached out to the Jamaica Chapter where he was welcomed with open arms. Since then, he has served on the Chapter's Board of Management Committee as Sergeant At Arms and was recognised as Member of the Quarter in 2020. Again, his own words best describe how he performed his duties, "I possess superior interpersonal skills, and I'm able to communicate and project a positive image with an action orientation to support rules and regulations that govern companies/society."

Andrew Witham, for your lifelong service to the profession of industrial security, for your learned contributions to the development of our craft and for your service to the Jamaica Chapter of ASIS international. We take great pride in presenting you with the Award of Merit

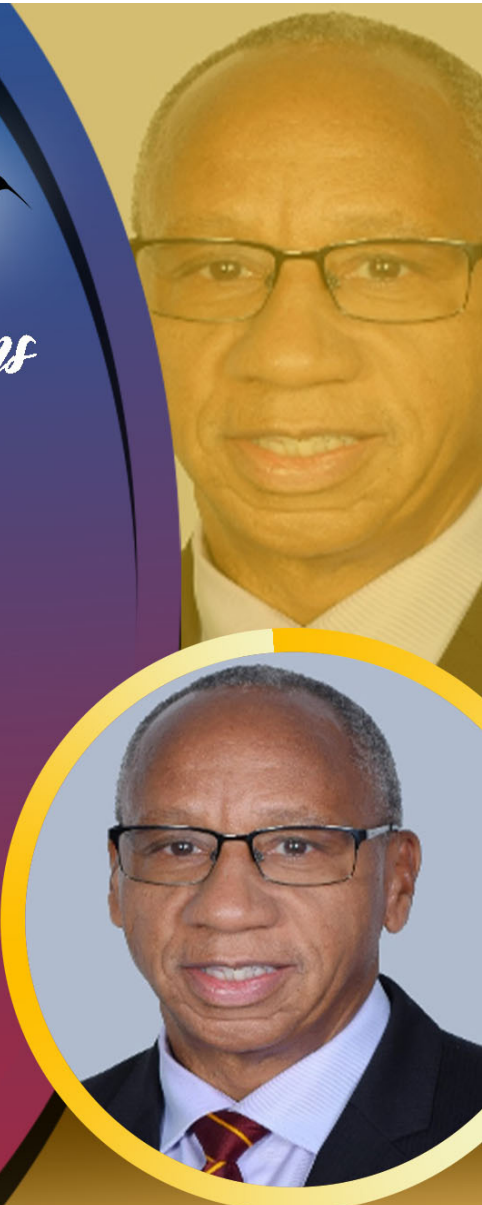


Capt. Basil Bewry
CPP, PCI, PSP

The Executive and Members of ASIS International Jamaica Chapter proudly congratulate

Capt. Basil Bewry, CPP, PCI, PSP
ASIS Member,

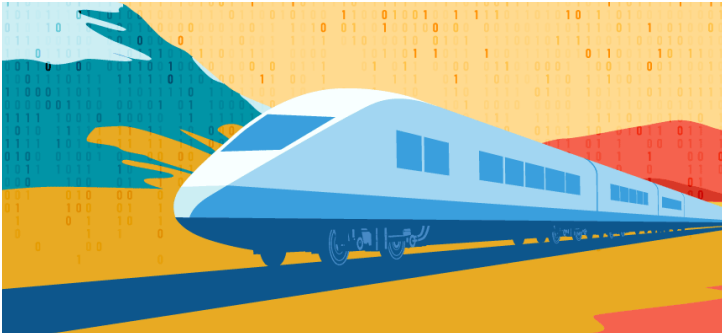
for being reappointed to the Latin America & Caribbean Regional Board and the Director in charge of the Membership Committee



JOIN
34,600
SECURITY
PROFESSIONALS

Take your security career to the next level

BECOME A MEMBER



How a Proposed TSA Regulation Might Change Rail Security

[Click Here to Read More](#)



GAIN EVERY ADVANTAGE

**More possibilities.
More responsibilities.
More trust.**

An ASIS International certification offers limitless opportunities to advance in your career. Whether you're new to the field or a security management veteran, you can find a credential that aligns with your objectives and raises your profile among our global community of security professionals. Our four certifications are widely recognized symbols of excellence that establish your mastery. This expertise gives you an unmatched advantage in your threat-prevention strategies—and in the marketplace.

[JOIN TODAY](#)



PHYSICAL SECURITY PROFESSIONAL (PSP) VIRTUAL STUDY COURSE

February 4 to May 10, 2025
24 Recorded Live Sessions held on Tuesdays & Thursdays (6:00pm - 9.00pm)

Benefits
Highly Experienced Faculty ✓ Interactive Learning ✓
Tips and Tools ✓ Progressive Assessments ✓
Proven Track Record ✓

Course Fees
ASIS Members - J\$110,000 (US\$700)
Non-Members - J\$125,000 (US\$800)

Early Bird Registration
From November 1 to December 31, 2024
20% Discount on Course Fees
Paid in full by December 31, 2024

Online Registration Available at
<https://form.jotform.com/243066579923871>

Or

[Click Here](#)



Steps to Certification

When you earn an ASIS board certification, you have a visible acknowledgment of a mastery of core security principles.

[Click Here to Read More](#)



Jamaica Chapter

For Information on ASIS International Jamaica Chapter, Contact:
Chairman: ojsmiley@gmail.com
Vice Chairman: swebbwoc@gmail.com
Latin America and Caribbean Regional Board Director: bewryba@gmail.com
Newsletter Editor: carlospipher@gmail.com